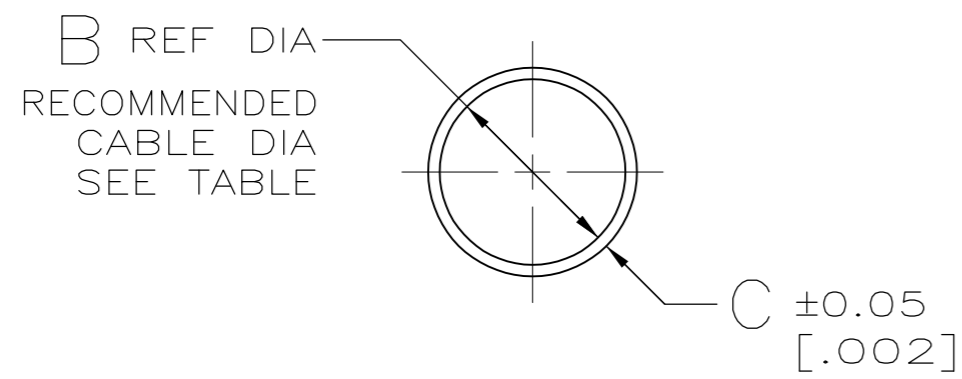
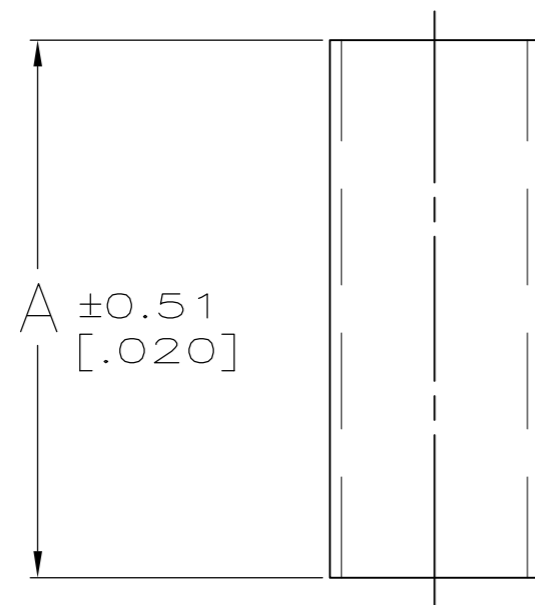


THIS DRAWING IS UNPUBLISHED. RELEASED FOR PUBLICATION
 © COPYRIGHT BY TYCO ELECTRONICS CORPORATION. ALL RIGHTS RESERVED.

LOC	DIST	REVISIONS			
P	LTR	DESCRIPTION	DATE	DWN	APVD
GP	00	F3	REVISED PER ECO-07-006181	15JUN07	JDP CWR

- 1 .000100 MIN TIN PER MIL-T-10727 OR TIN-LEAD.
- 2 .000100 MIN TIN PER MIL-T-10727.
- 3 COPPER PER QQ-C-576
- 4 OBSOLETE



FINISH	USED WITH	RECOMMENDED CABLE DIA	C	B	A	PART NUMBER
2	-	4.83-6.10 [.190-.240]	0.38 [.015]	6.15 [.242]	10.16 [.400]	5-745130-5
	7-745129-8 7-745129-9	5.84-7.11 [.230-.280]	0.38 [.015]	7.16 [.282]	17.78 [.700]	4-745130-5
	-	17.78-19.05 [.700-.750]	0.51 [.020]	19.30 [.760]	17.78 [.700]	4-745130-4
	-	14.99-16.51 [.590-.650]	0.51 [.020]	16.76 [.660]	17.78 [.700]	4-745130-3
	7-745129-4 7-745129-6	11.81-13.46 [.465-.530]	0.51 [.020]	13.59 [.535]	17.78 [.700]	4-745130-2
	7-745129-1 7-745129-5	9.65-10.92 [.380-.430]	0.38 [.015]	11.10 [.437]	17.78 [.700]	4-745130-1
	6-745129-9	8.00-9.27 [.315-.365]	0.38 [.015]	9.52 [.375]	17.78 [.700]	4-745130-0
	7-745129-2	7.62-8.89 [.300-.350]	0.38 [.015]	8.99 [.354]	17.78 [.700]	3-745130-9
	7-745129-0 7-745129-3	4.83-6.10 [.190-.240]	0.38 [.015]	6.15 [.242]	17.78 [.700]	3-745130-8
1	-	4.83-6.10 [.190-.240]	0.38 [.015]	6.15 [.242]	10.16 [.400]	3-745130-7
	3-745129-2 3-745129-4	5.84-7.11 [.230-.280]	0.38 [.015]	7.16 [.282]	17.78 [.700]	1-745130-6
	-	17.78-19.05 [.700-.750]	0.51 [.020]	19.30 [.760]	17.78 [.700]	1-745130-4
	-	14.99-16.51 [.590-.650]	0.51 [.020]	16.76 [.660]	17.78 [.700]	1-745130-3
	2-745129-2 2-745129-6	11.81-13.46 [.465-.530]	0.51 [.020]	13.59 [.535]	17.78 [.700]	1-745130-2
	1-745129-9 2-745129-3	9.65-10.92 [.380-.430]	0.38 [.015]	11.10 [.437]	17.78 [.700]	1-745130-1
	1-745129-7	8.00-9.27 [.315-.365]	0.38 [.015]	9.52 [.375]	17.78 [.700]	1-745130-0
	2-745129-0	7.62-8.89 [.300-.350]	0.38 [.015]	8.99 [.354]	17.78 [.700]	745130-9
	1-745129-8 2-745129-1	4.83-6.10 [.190-.240]	0.38 [.015]	6.15 [.242]	17.78 [.700]	745130-8

THIS DRAWING IS A CONTROLLED DOCUMENT.		DWN B. MCMASTER 21MAY04	Tyco Electronics Corporation Harrisburg, Pa 17105-3608	
DIMENSIONS: mm[INCHES]		CHK C. ROHDE 21MAY04	NAME FERRULE, OUTER, AMPLIMITE HDP-20	
TOLERANCES UNLESS OTHERWISE SPECIFIED: 0 PLC ± - 1 PLC ± - 2 PLC ± - 3 PLC ± - 4 PLC ± - ANGLES ± -		APVD M. WALMSLEY 21MAY04	DRAWING NO A2 00779 C=745130	
MATERIAL 3		FINISH SEE TABLE	WEIGHT -	RESTRICTED TO -
		CUSTOMER DRAWING	SCALE 4:1	SHEET 1 OF 1
			REV F3	